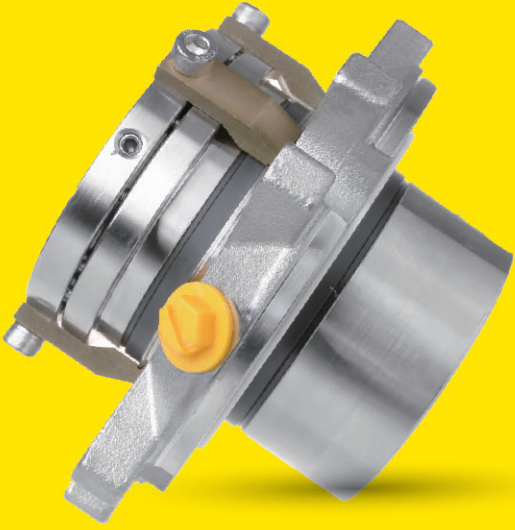


EDM

经济型双端面密封系列

离心泵专用解决方案

The Economically Efficient Double Seal Solution for Centrifugal Pumps



卧式安装
Horizontal

产品特色Key Features

- 旋转式平衡式密封端面
 - 模块化设计，通用零部件标准化，便于降低维修成本
 - 小弹簧设计，弹簧不与介质接触，机封使用寿命持久
 - 驱动螺钉直接定位轴或者轴套上，最大程度减少驱动损失
 - 4个螺栓设计，可以适用于ISO 2858标准泵型
 - 可用于API 52/53/54号冲洗方案
- Rotating and balanced design.
 - Modular design, universal compatible parts, reduced production cost.
 - Springs loading protect from liquid, longer seal lifetime.
 - Drive screws clamp directly on to shaft or sleeve to minimise drive loss.
 - Standard 4 bolts gland designed for ISO 2858 pump.
 - Suitable for Plan 52/53/54.

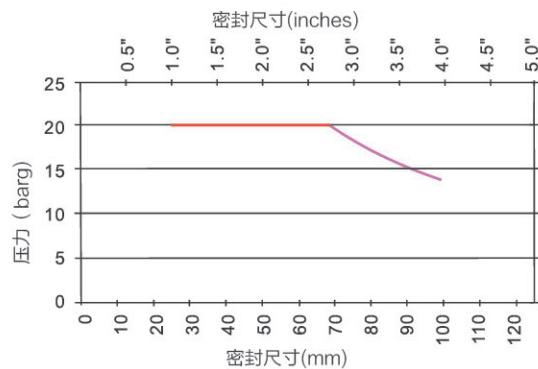
运行参数Operating Conditions

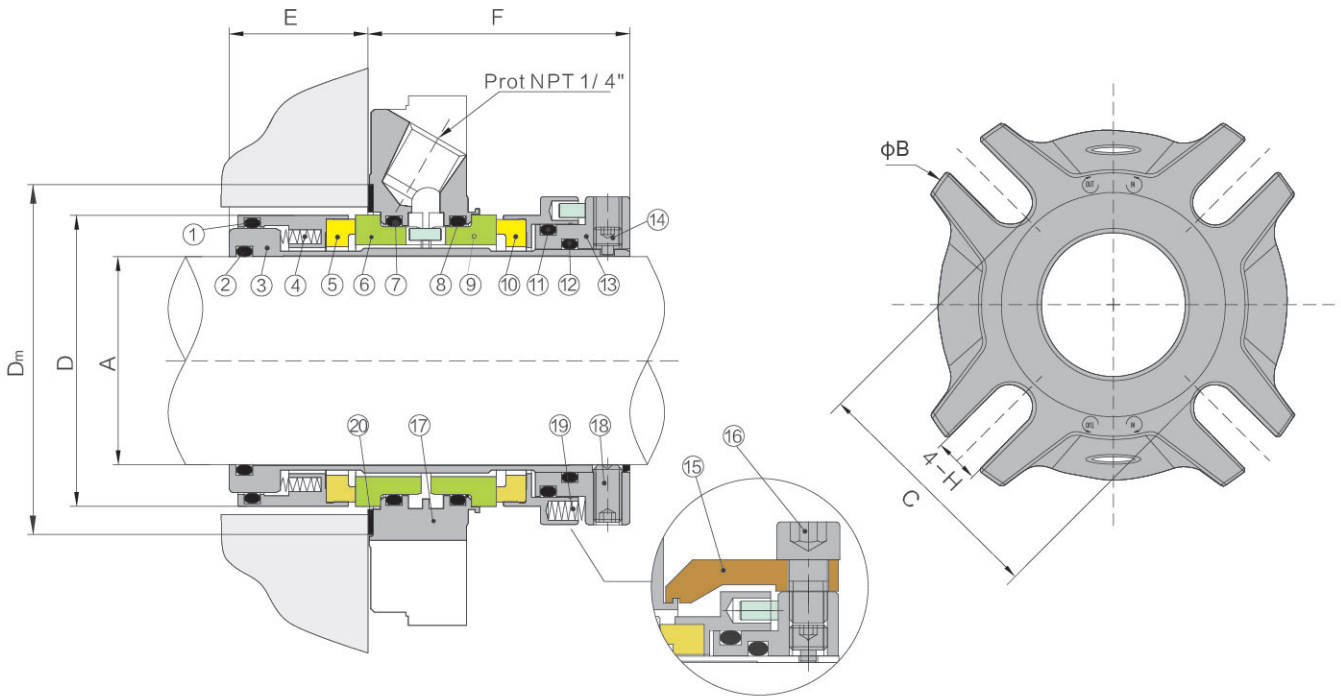
温度/Temperature	-20° C to +180° C [-68° F to +446° F]
压力/Pressure	0~20 Bar
线速度/On-wire speed	Up to 20 m/s
适用介质/Sealing product	各种酸性，碱性，低度浆液，水油等介质 Acid,alkaline, low percentage of pulp, water, oil and other similar media.

材质Material Arrangement

密封环/Seal faces	SSIC/CARBON/TC
橡胶/Rubber	EPR/Viton®/Aflas®/Kalrez®
弹簧/Springs	ALLOY 276
金属部件/Metal	316SS/DUPLEX/ALLOY 276/904L

压力图Pressure Chart





EDM-各部件信息

NO	描述/Description	材质/Material	NO	描述/Description	材质/Material
1	O型圈/O-Ring	EPR/Viton®/Aflas®/Kalrez®	11	O型圈/O-Ring	EPR/Viton®/Aflas®/Kalrez®
2	O型圈/O-Ring	EPR/Viton®/Aflas®/Kalrez®	12	O型圈/O-Ring	EPR/Viton®/Aflas®/Kalrez®
3	轴套/Shaft Sleeve	316SS 不锈钢/Stainless Steel	13	定位环/Clamp Ring	316SS 不锈钢/Stainless Steel
4	弹簧/Spring	Alloy 276	14	定位螺钉/Anti-tamper Screw	316SS 不锈钢/Stainless Steel
5	一级动环/Inboard Rotary Face	Carbon/SSIC/TC	15	定位块/Setting Clip	铜/Brass
6	一级静环/Inboard Stationary Face	SSIC/TC	16	定位块螺钉/Clip Screw	316SS 不锈钢/Stainless Steel
7	O型圈/O-Ring	EPR/Viton®/Aflas®/Kalrez®	17	压盖/Gland	316SS 不锈钢/Stainless Steel
8	O型圈/O-Ring	EPR/Viton®/Aflas®/Kalrez®	18	驱动螺钉/Drive Screw	316SS 不锈钢/Stainless Steel
9	二级静环/Outboard Stationary Face	SSIC/TC	19	弹簧/Spring	Alloy 276
10	二级动环/Outboard Rotary Face	Carbon/SSIC/TC	20	垫片/Gasket	非石棉/AF-1

EDM-尺寸信息(mm)

ØA	ØB	C	ØD	ØDm	E	F	H
24	110.0	60.5	38.0	56.0	31.1	51.0	13.2
25	110.0	60.5	39.4	56.0	31.1	51.0	13.2
28	110.0	60.5	42.6	58.0	31.1	51.0	13.2
30	110.0	63.5	44.0	61.5	31.1	51.0	13.2
32	110.0	63.5	46.0	61.5	31.1	51.0	13.2
33	110.0	63.5	47.0	61.5	31.1	51.0	13.2
35	110.0	67.0	49.0	65.0	31.1	51.0	13.2
38	127.0	72.0	55.8	70.0	29.1	56.3	14.2
40	127.0	72.0	55.8	70.0	29.1	56.3	14.2
43	127.0	72.0	59.0	71.0	29.1	56.3	14.2
45	133.0	77.0	62.2	75.0	29.1	56.3	14.2
48	133.0	77.0	65.4	75.0	29.1	56.3	14.2
50	133.0	77.0	65.4	75.0	29.1	56.3	14.2
53	139.0	86.0	68.5	83.0	31.3	56.3	14.2
55	146.0	94.0	71.7	92.0	31.3	56.3	17.5
58	146.0	94.0	74.9	92.0	31.3	56.3	17.5
60	155.0	100.0	78.1	92.0	31.3	56.3	17.5
63	178.0	109.5	84.1	108.0	28.1	63.8	17.5
65	178.0	109.5	87.3	108.0	28.1	63.8	17.5
70	178.0	109.5	90.5	108.0	28.1	63.8	17.5
75	190.5	125.0	96.8	124.0	28.1	63.8	17.5
80	190.5	125.0	100.0	124.0	28.1	63.8	17.5
85	203.0	135.0	106.4	133.0	28.1	63.8	17.5
90	216.0	150.0	112.7	146.0	28.1	63.8	20.0
95	216.0	150.0	119.1	146.0	28.1	63.8	20.0
100	229.0	168.0	122.2	165.0	28.1	63.8	20.0

EDM-尺寸信息(Inches)

ØA	ØB	C	ØD	ØDm	E	F	H
1.000	4.125	2.375	1.550	2.205	1.226	2.008	0.520
1.125	4.250	2.375	1.675	2.283	1.226	2.008	0.520
1.250	4.375	2.500	1.810	2.421	1.226	2.008	0.520
1.375	4.375	2.625	1.928	2.559	1.226	2.008	0.520
1.500	5.000	2.832	2.198	2.756	1.147	2.217	0.559
1.625	5.000	2.832	2.323	2.795	1.147	2.217	0.559
1.750	5.250	3.022	2.448	2.953	1.147	2.217	0.559
1.875	5.250	3.022	2.573	2.953	1.147	2.217	0.559
2.000	5.500	3.386	2.698	3.268	1.231	2.217	0.559
2.125	5.750	3.687	2.823	3.622	1.231	2.217	0.689
2.250	5.750	3.687	2.948	3.622	1.231	2.217	0.689
2.375	6.000	3.937	3.073	3.622	1.231	2.217	0.689
2.500	7.000	4.312	3.312	4.252	1.231	2.217	0.689
2.625	7.000	4.312	3.437	4.252	1.107	2.512	0.689
2.750	7.000	4.312	3.562	4.252	1.107	2.512	0.689
2.875	7.500	4.937	3.687	4.764	1.107	2.512	0.689
3.000	7.500	4.937	3.812	4.882	1.107	2.512	0.689
3.125	7.500	4.937	3.937	4.882	1.107	2.512	0.689
3.250	8.000	5.312	4.062	5.118	1.107	2.512	0.689
3.375	8.000	5.312	4.187	5.236	1.107	2.512	0.689
3.500	8.000	5.312	4.312	5.236	1.107	2.512	0.689
3.625	8.500	5.900	4.437	5.748	1.107	2.512	0.787
3.750	8.500	5.900	4.562	5.748	1.107	2.512	0.787
3.875	8.500	5.900	4.687	5.748	1.107	2.512	0.787
4.000	9.000	6.600	4.812	6.496	1.107	2.512	0.787

© 如设备轴径大于100mm (4英寸) 的特殊需求, 请与FBU的技术部门联系确认相关尺寸和设计可能性
If seal sizes bigger than 100mm (4") is required for specified equipment, please contact FBU technical department for dimensional information and availability.